



## ***Sturtevant Richmond***

3203 N. Wolf Road Franklin Park, IL 60131

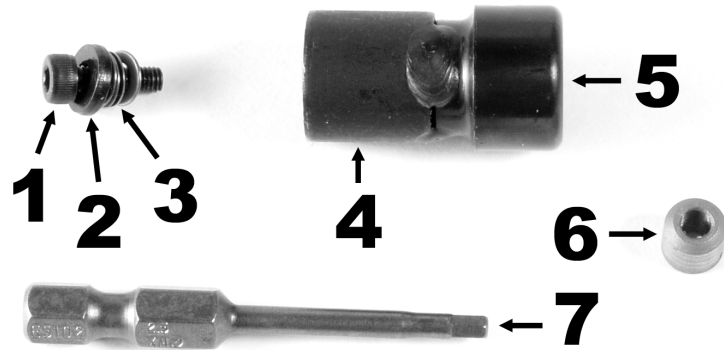
Phones: 847/455-8677 800/877-1347 Fax: 847/455-0347

E-mail: CustomerService@sr torque.com

Web: www.srtorque.com

### **Rundown Fixtures Instruction Sheet**

<b>Applicable Products</b>	
<b>Part No.</b>	<b>Model</b>
10349	Rundown Fixture 1 Nm
10350	Rundown Fixture 3 Nm
10351	Rundown Fixture 6 Nm
10352	Rundown Fixture 17 Nm
10353	Rundown Fixture 34 Nm (F Hex)
10354	Rundown Fixture 34 Nm (Sq. Drive)



#### **Photo Key:**

1. Class 10.9 Socket Head Cap Screw
2. Flat Washer, 2 per fixture, spreads load from bolt over face of top Belleville Washer.
3. Belleville Washers, 4 per fixture, lubricated with molybdenum disulfide grease, sets joint rate.
4. Body, houses internal components.
5. Female Hex Drive or Male Drive Square, connects to tester drive.
6. Bushing, used to emulate hard joint reaction.
7. Power Bit, to drive socket head cap screw.

#### **To Use Fixture:**

1. Unscrew Bolt to last thread.
2. Insert rundown fixture onto male hex drive of tester. Tighten hex drive screw to secure.
3. Configure tester for power tool test per tester instructions.
4. Configure power tool for testing per power tool instructions.
5. Engage power bit to socket head cap screw.
6. Perform test; run bolt down fully into fixture until it stops moving or power tool shuts off.

#### **Fixture Maintenance:**

- Check bolt hex and thread condition after every set of tests. Replace bolt if threads or hex are damaged.
- Check lubricant before each set of tests. Lubricant must be present on Belleville Washers, under bolt head, and on bolt threads and must be clean (free of contaminants).
- Disassemble fixture, clean lubricant off components, and replace with new lubricant every 3,000 rundowns or when lubricant becomes contaminated, whichever occurs first.
- Visually inspect washers for cracks or chips each time fixture is disassembled. Replace any cracked or chipped washer immediately - before next use of fixture.

**Safety:**

Always wear all recommended safety equipment when operating power tools.

**Questions and Parts:**

If you have any questions or need to order parts for your rundown fixture, please contact S/R using the contact information at the top of this instruction sheet. Part numbers are below.

**Part Numbers**

<b>Component</b>	<b>1 Nm 10349</b>	<b>3 Nm 10350</b>	<b>6 Nm 10351</b>	<b>17 Nm 10352</b>	<b>34 Nm 10353</b>	<b>34 Nm 10354</b>
Bolt	890866	890871	890875	890881	890858	890858
Bolt Size/Class	M3 x 0.5 Class 12.9 10mm Shank	M4 x 0.7 Class 12.9 10mm Shank	M5 x 0.8 Class 12.9 12mm Shank	M6 x 1.0 Class 12.9 16mm Shank	M8 x 1.25 Class 12.9 20mm Shank	M8 x 1.25 Class 12.9 20mm Shank
Flat Washer [hardened]	891046	891038	891042	891034	891028	891028
Belleville Washer	891047	891037	891043	891033	891027	891027
Fixture Body	811384	811385	811386	811387	811388	811389
Bushing	891048	891039	891044	891035	891029	891029
Power Bit	891049	891040	891045	891036	891041	891041