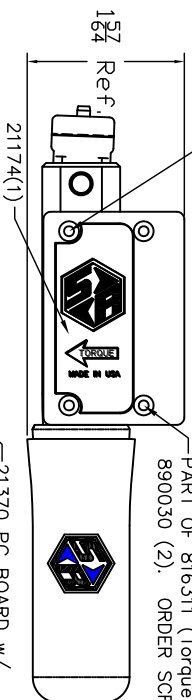
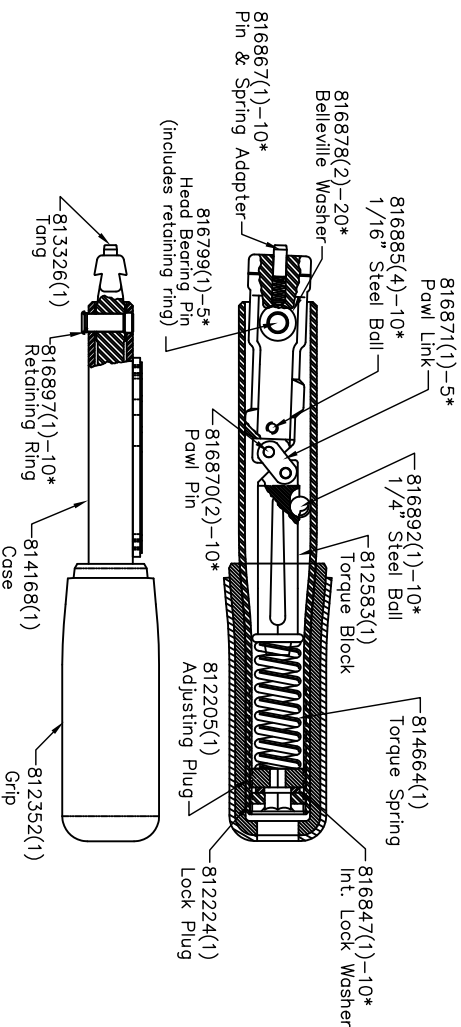
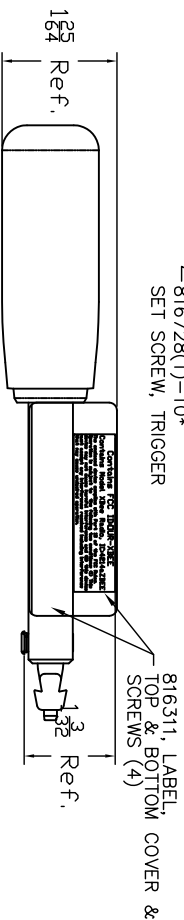
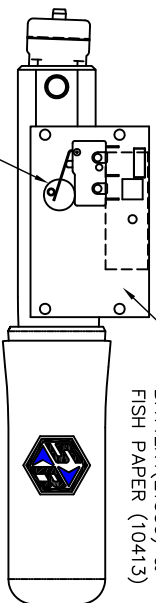


PART OF 816311 (Torque 1.5 – 2.5 INLbs)
890029 (2). ORDER SCREW SEPARATELY AS 816778.

PART OF 816311 (Torque 1.5 – 2.5 INLbs)
890030 (2). ORDER SCREW SEPARATELY AS 816726.



**WARNING: DO NOT MIX
BATTERY TYPES BETWEEN
21152 AND THIS PCB!**



811372-Tang Ass'y. (Includes
Tang & Pin & spring adapter)
857045 – Instruction Sheet
857273 – Service Instructions

LEGEND: () = Quantity/Tool
* = Quantity/Multi-Pak

816799-THIS PIN IS FORMED OVER
CUSTOMER MUST GRIND OFF FORMED END
& INSTALL THIS PIN FORMING THE HEAD
OVER THE RETAINING RING AS SHOWN.

