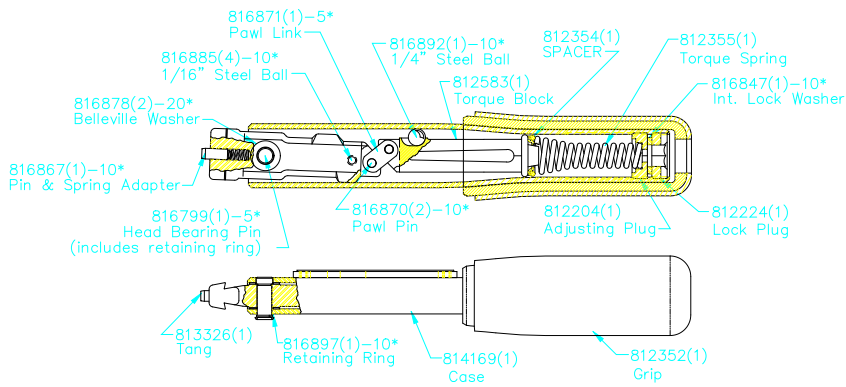
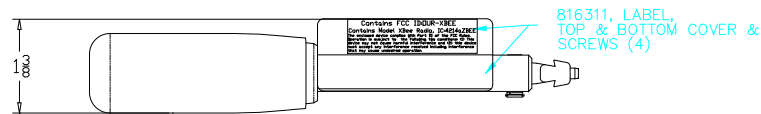
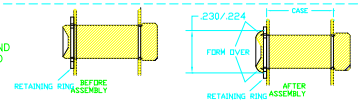
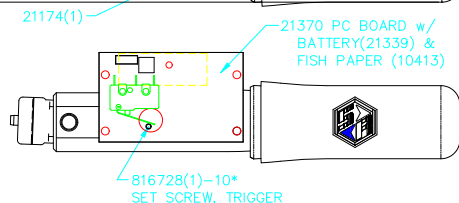
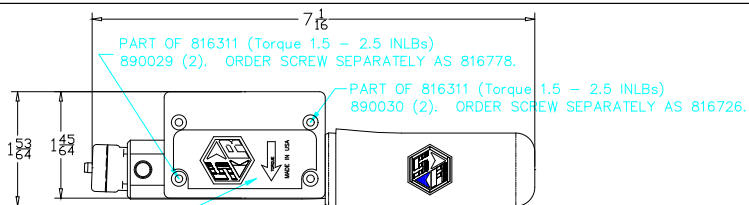


WARNING: DO NOT MIX BATTERY TYPES BETWEEN 21152 AND THIS PCB!

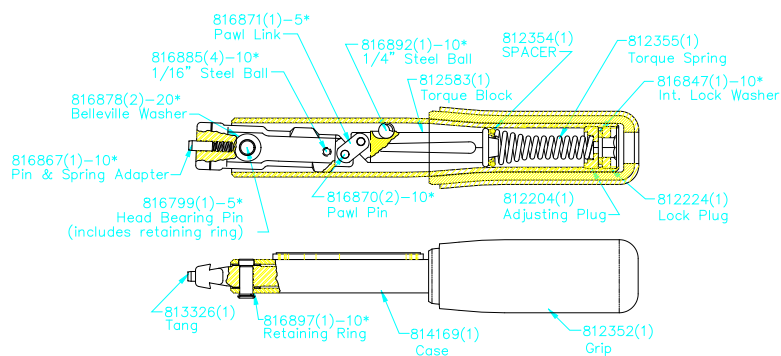
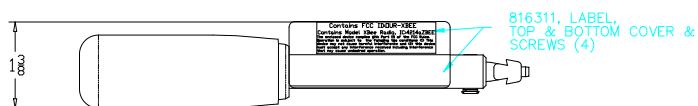


816799--THIS PIN IS FORMED OVER CUSTOMER MUST GRIND OFF FORMED END & INSTALL THIS PIN FORMING THE HEAD OVER THE RETAINING RING AS SHOWN.





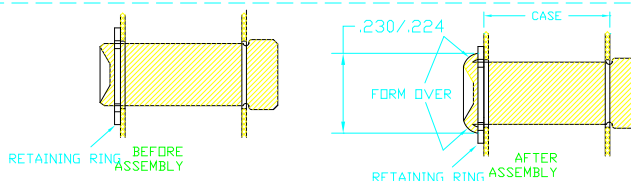
**WARNING: DO NOT MIX
BATTERY TYPES BETWEEN
21152 AND THIS PCB!**



811372-Tang Ass'y. (Includes
Tang & Pin & spring adapter)
857045 - Instruction Sheet
857273 - Service Instructions

LEGEND: () = Quantity/Tool
* = Quantity/Multi-Pak

816799-THE PIN IS FORMED OVER
CUSTOMER MUST GRIND OFF FORMED END
& INSTALL THIS PIN FORMING THE HEAD
OVER THE RETAINING RING AS SHOWN.



THIS PRINT AND ALL INFORMATION APPEARING THEREON IS THE PROPERTY
OF "STURTEVANT/RICHMONT". NEITHER THE PRINT NOR THE INFORMATION
THEREON MAY BE REPRODUCED OR USED IN ANY MANNER WHATSOEVER OR
DIVULGED TO ANY OTHER PERSON UNLESS SPECIFICALLY AUTHORIZED BY
"STURTEVANT/RICHMONT".

PART DESCRIPTION

SLTC-2.4FM-50I 810311-E

DIAGRAM NO. & REV.