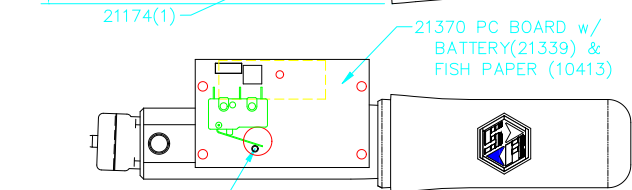
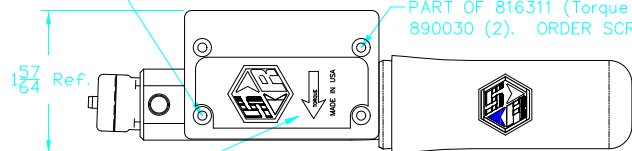
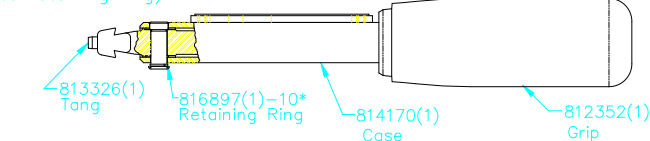
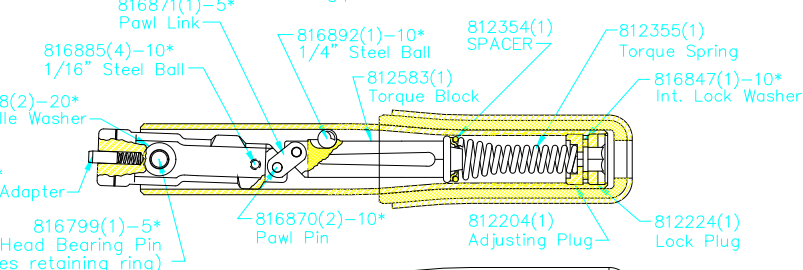
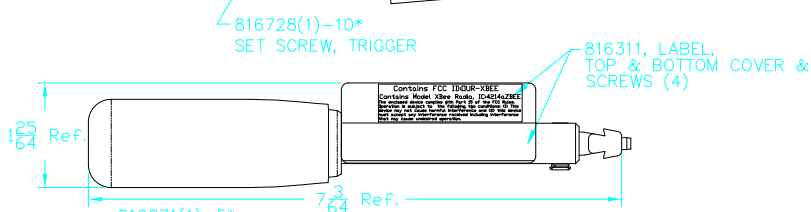


PART OF 816311 (Torque 1.5 – 2.5 INLBs)
890029 (2). ORDER SCREW SEPARATELY AS 816778.

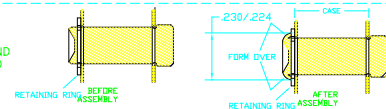
PART OF 816311 (Torque 1.5 – 2.5 INLBs)
890030 (2). ORDER SCREW SEPARATELY AS 816726.

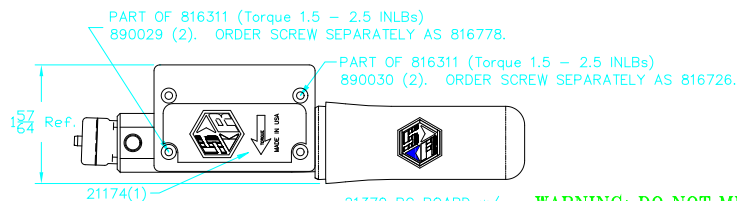


**WARNING: DO NOT MIX
BATTERY TYPES BETWEEN
21152 AND THIS PCB!**

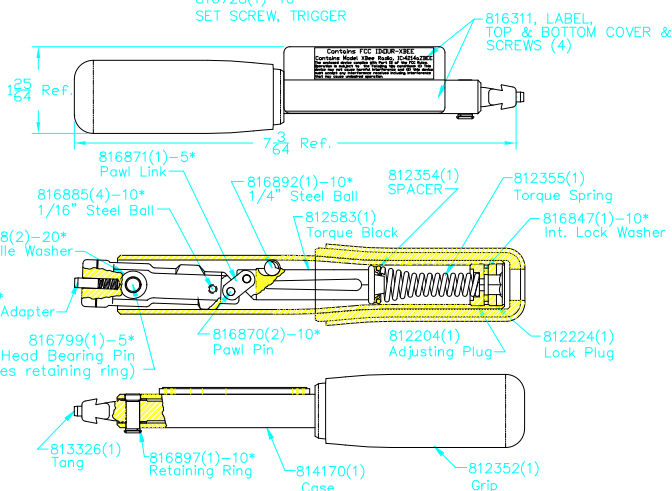


816799—THIS PIN IS FORMED OVER
CUSTOMER MUST GRIND OFF FORMED END
& INSTALL THIS PIN FORMING THE HEAD
OVER THE RETAINING RING AS SHOWN.





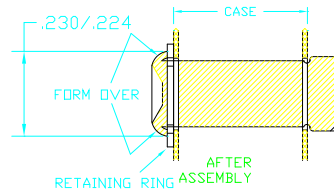
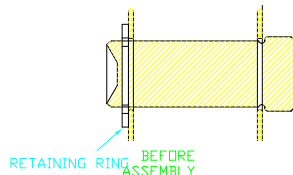
WARNING: DO NOT MIX BATTERY TYPES BETWEEN 21152 AND THIS PCB!



811372-Tang Ass'y. (Includes Tang & Pin & spring adapter)
857045 - Instruction Sheet
857273 - Service Instructions

LEGEND: () = Quantity/Tool
* = Quantity/Multi-Pak

816799--THIS PIN IS FORMED OVER CUSTOMER MUST GRIND OFF FORMED END & INSTALL THIS PIN FORMING THE HEAD OVER THE RETAINING RING AS SHOWN.



THIS PRINT AND ALL INFORMATION APPEARING THEREON IS THE PROPERTY OF "STURTEVANT/RICHMONT". NEITHER THE PRINT NOR THE INFORMATION THEREON MAY BE REPRODUCED OR USED IN ANY MANNER WHATSOEVER OR DIVULGED TO ANY OTHER PERSON UNLESS SPECIFICALLY AUTHORIZED BY "STURTEVANT/RICHMONT".

PART DESCRIPTION

PTV, SLTC-2.4FM-150I

DIAGRAM NO. & REV.

810312-E