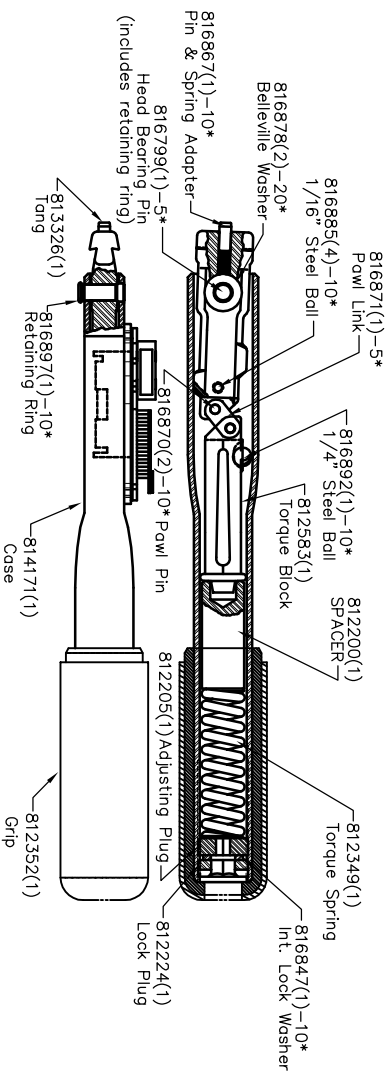
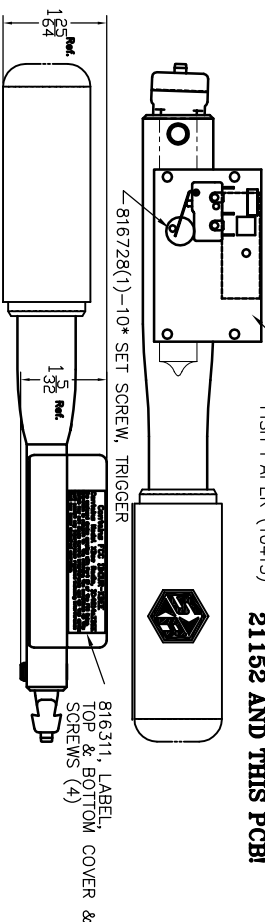


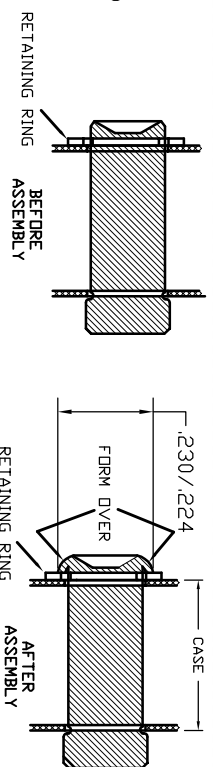
WARNING: DO NOT MIX BATTERY TYPES BETWEEN 21152 AND THIS PCB!



811372-Tang Ass'y. (includes Tang & Pin & spring adapter)
857045 - Instruction Sheet
857273 - Service Instructions

LEGEND: () = Quantity/Tool
* = Quantity/Multi-Pak

816799-THIS PIN IS FORMED OVER CUSTOMER MUST GRIND OFF FORMED END & INSTALL THIS PIN FORMING THE HEAD OVER THE RETAINING RING AS SHOWN.



THIS PRINT AND ALL INFORMATION APPEARING THEREON IS THE PROPERTY OF "STURTEVANT/RICHMONT". NEITHER THE PRINT NOR THE INFORMATION THEREON MAY BE REPRODUCED OR USED IN ANY MANNER WHATSOEVER OR DIVULGED TO ANY OTHER PERSON UNLESS SPECIFICALLY AUTHORIZED BY "STURTEVANT/RICHMONT".

PART DESCRIPTION	DIAGRAM NO. & REV.
PTV, SLTC-2.4FM-3001	810313-E