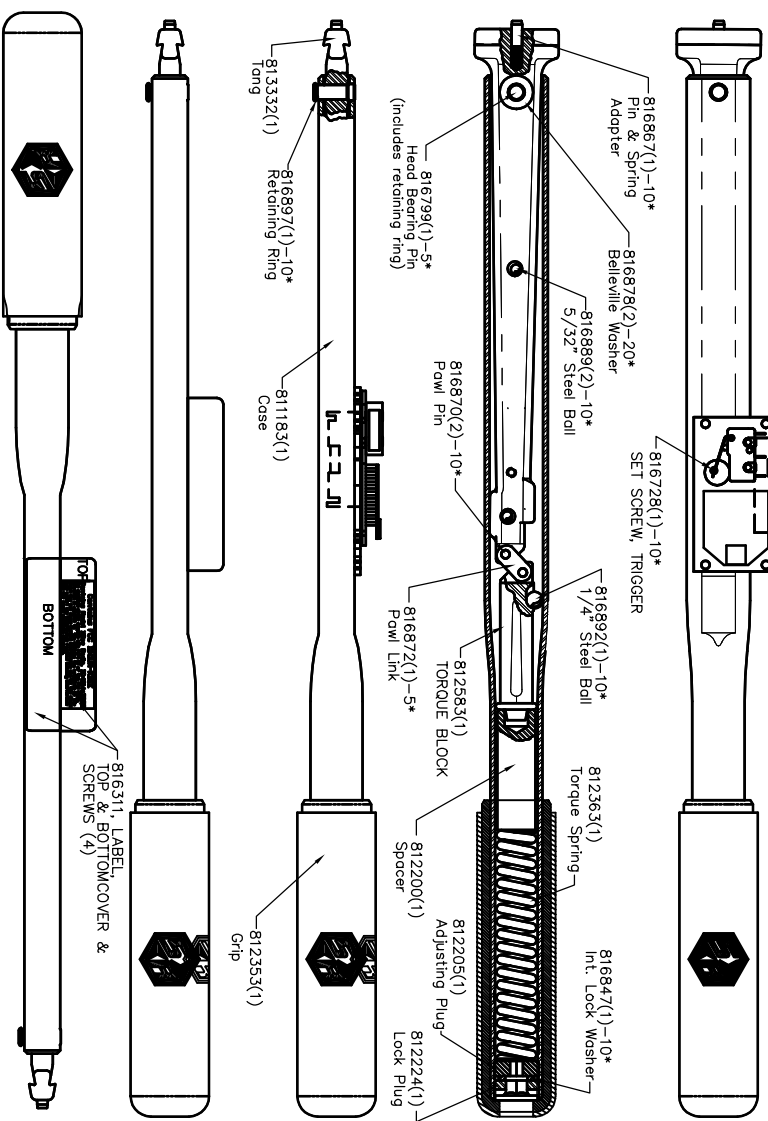


PART OF 816311 (Torque 1.5 - 2.5 INLBS)  
890031 (2). ORDER SCREW SEPARATELY AS 816727.

PART OF 816311 (Torque 1.5 - 2.5 INLBS)  
890030 (2). ORDER SCREW SEPARATELY AS 816726.

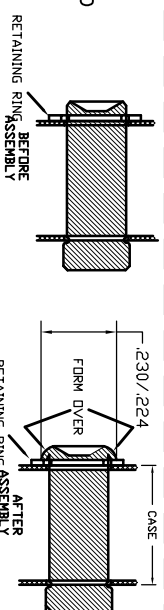
**WARNING: DO NOT MIX BATTERY TYPES BETWEEN 21152 AND THIS PCB!**



811372-Tang Ass'y. (Includes Tang & Pin & spring adapter)  
857045 - Instruction Sheet  
857273 - Service Instructions

LEGEND: ( ) = Quantity/Tool  
\* = Quantity/Multi-Pak

816799- THIS PIN IS FORMED OVER CUSTOMER MUST GRIND OFF FORMED END & INSTALL THIS PIN FORMING THE HEAD OVER THE RETAINING RING AS SHOWN.



**STURTEVANT RICHMONT**  
TEST MEASUREMENT SYSTEMS  
DIVISION OF PETERSON CORPORATION

THIS PRINT AND ALL INFORMATION APPEARING THEREON IS THE PROPERTY OF STURTEVANT/RICHMONT. NEITHER THE PRINT NOR THE INFORMATION THEREON MAY BE REPRODUCED OR USED IN ANY MANNER WHATSOEVER BY ANY OTHER PERSON UNLESS SPECIFICALLY AUTHORIZED BY STURTEVANT/RICHMONT.

PART DESCRIPTION

DIAGRAM NO. & REV.

SLTC-2.4FM-18001 810315-E